

# ELECTRONIC ACCESS CONTROL SYSTEMS

LISTA SOLUTIONS FOR OPTIMUM SECURITY AND EFFICIENT PROCESSES



# STORE SAFELY. WORK EFFICIENTLY.

With electronic access control systems from LISTA, you can optimise the storage and management of important tools and materials: safely, efficiently and reliably. All solutions are modular and can therefore be perfectly tailored to your individual needs. LISTA Electronic Control (LEC) can be configured with a warehouse management system such as LISTA E-Control as an integrated dispensing system with access at the drawer and compartment level. LISTA E-Cabinets include a range of different electric cabinets that can also be connected to goods management and flexibly combined with LEC solutions. Enjoy an ingenious system in LISTA quality and make optimum use of the advantages of electronic dispensing and access control.



# BENEFITS AT A GLANCE

Electronic access and dispensing systems are distinguished by a large number of advantages. They help to make processes safer and more efficient and contribute to significant cost reductions, because they:



## Clear effects

In practice, automating access and dispensing saves up to:

Machine downtimes	-15%
Inventory	-20%
Material usage	-40%
Procurement times	-50%

## Versatile application

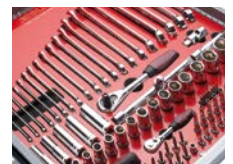
LISTA solutions for dispensing and access control ensure optimum protection, from industry to healthcare.



Tools



Precious metals, jewellery and watches



Hand tools



Medicines



C-parts

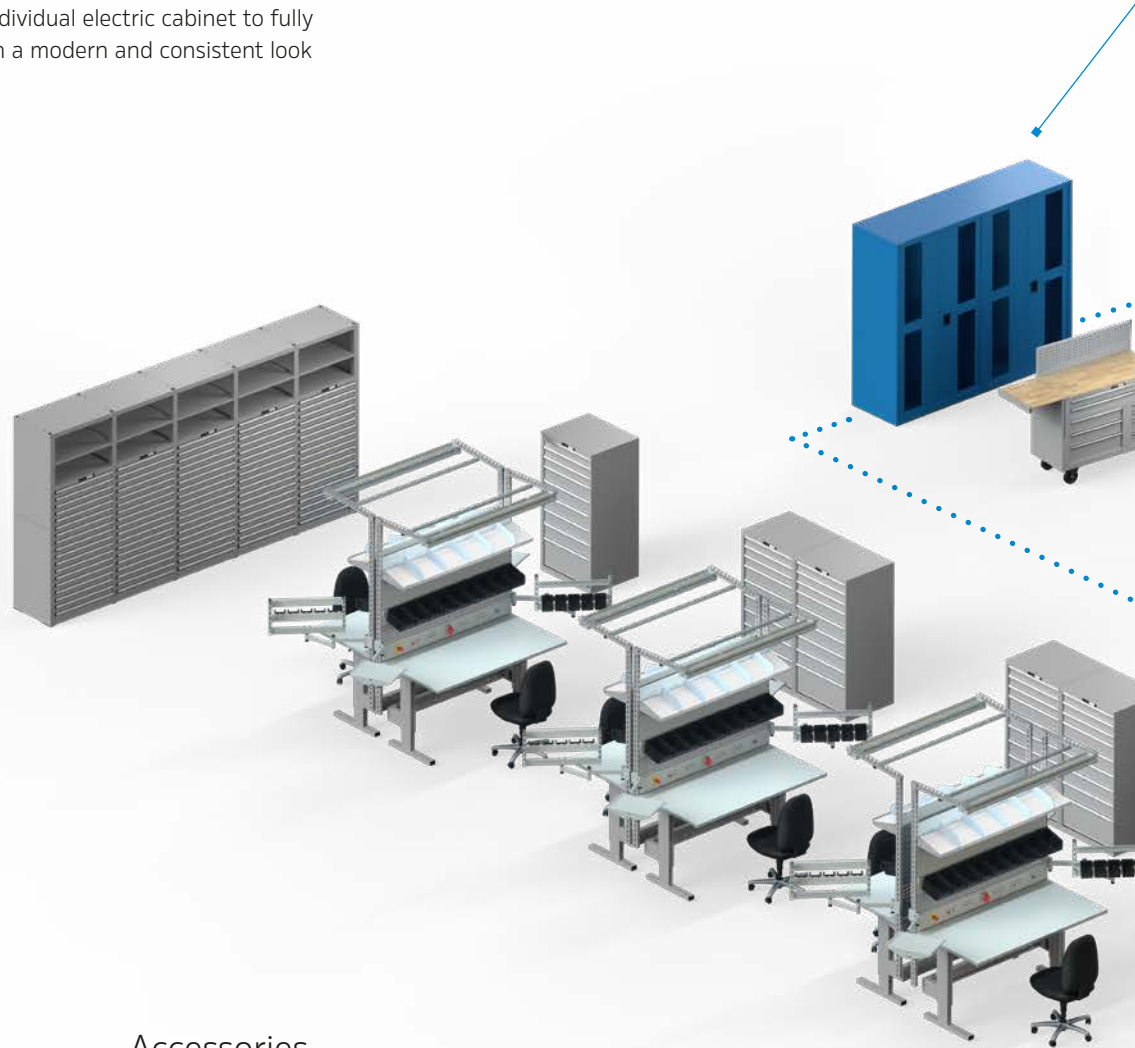


Personal Gear



# YOUR LISTA SOLUTIONS FOR ACCESS AND DISPENSING CONTROL

At LISTA, we want you to be able to make optimum use of the advantages of electronic access and dispensing systems. That's why we have designed our range to be modular so that you can flexibly put together the solution that suits you: the two product lines LISTA Electronic Control and LISTA E-Cabinets can be individually configured and combined in a variety of ways, operated as a stand-alone solution with LISTA E-Control or connected to your own software solutions via the standard interface. This means that everything is possible – from an individual electric cabinet to fully automated parts management – in a modern and consistent look and feel.



## E-Control software



LISTA E-Control is the controlling and warehouse management software for LEC and E-Cabinet solutions. If necessary, it can also be used independently for hardware from other manufacturers.

## Accessories



We provide you with accessories perfectly matched to your LISTA access and dispensing system – from card readers to touch monitors.

## E-Cabinets

### Powered hinged door cabinet

The LISTA powered hinged door cabinet is suitable for larger stored items and can optionally be equipped with viewing windows.

### Powered compartment cabinet

Powered compartment cabinets from LISTA are ideal for battery-powered tools and personal storage.

### E-bike charging station

The LISTA e-bike charging station is a special solution for the safe storage and charging of e-bike batteries.



### Powered drawer cabinet

Powered drawer cabinets from LISTA can be controlled electronically as a whole, thereby enabling reliable access control at the cabinet level.



## LISTA Electronic Control (LEC)

The LEC cabinets enable secure access control and warehouse management at the drawer and compartment level with LISTA E-Control software. Alternatively, it is possible to connect to your own software solutions.

## LISTA ELECTRONIC CONTROL (LEC) CONTROL WITHOUT COMPROMISE

LISTA Electronic Control not only allows you to control access to important stored goods securely, but also with maximum flexibility, as you can configure your dispensing system as required: various modules can be individually combined, and access rights freely distributed and organised – either for individual drawers, drawer

compartments or both combined in a single cabinet. This means that you always receive a consistent solution in a modern design, with perfectly coordinated accessories on request, and of course with integrated emergency opening. What more could you want?



**+ Modular system**  
for individual configuration options

**+ Individual and intuitive**  
thanks to numerous configuration options and simple operation

**+ Modern design**  
in a consistent look and feel

**+ Additional security**  
through metal drawer compartments specially developed for this system

**+ Extendable**  
with matching accessories and LISTA E-Cabinets

## Modules at a glance



### 1 Basic unit

The basic module of your LEC solution can be individually or flexibly expanded with any number of extension units. The height and number of drawers are variable. Drawers with and without compartments can be combined as desired. The two-sided LED lighting at the front and the attachment with integrated screen holder are always included.

### 2 Extension unit

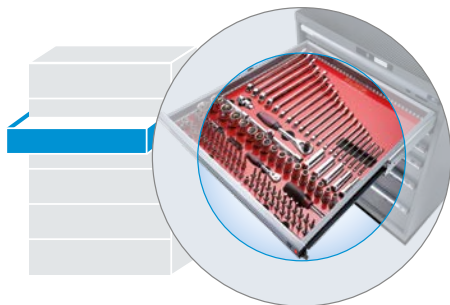
The add-on module expands the basic unit and offers the same configuration options as the base module. The LED lighting on both sides and the cross-cabinet attachment create a consistent look and feel.

### 3 LED lighting

The continuous LED lighting on the cabinet provides a modern appearance and an even better overview. With the appropriate setting, displays on both sides of the handle indicate the position or access area of the requested articles and warn of low stock levels.

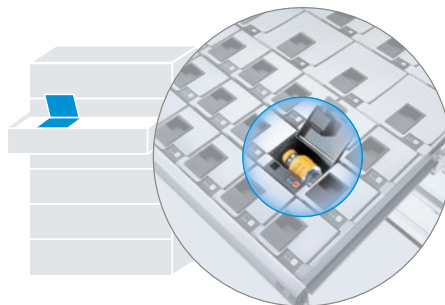
### 4 E-Control

LISTA software for controlling and managing your LEC solution enables quick access and full control of your stored goods. It is easy to use and helps to sustainably optimise your warehousing through additional functions.



### Access control at drawer level

LISTA Drawer Control (LDC)  
regulates access to individual drawers



### Access control at compartment level

LISTA Parts Control (LPC)  
controls access to drawer compartments



### Standard interface

LEC modules can optionally be connected to their own software solutions via the ethernet interface integrated as standard. Expansion with E-Cabinets is also possible.



## LEC components and versions



### Basic unit

The basic LEC drawer cabinet is available in two widths and in any colour or colour combination. The height and number of drawers are variable. The LED lighting and the attachment with integrated screen holder are standard features. All cabling is carried out from above. The monitor is an optional accessory.

### Features

Housing (W×D)	36 × 36 E (717 × 725 mm) 54 × 36 E (1023 × 725 mm)
Cabinet height (H)	700 / 850 / 1000 / 1150 / 1450 mm
Drawer front height (H)	75 / 100 / 150 / 200 / 250 / 300 mm
Load capacity	200 kg
Optional	E-Control software Standard partition material Monitor, base, PC, card reader, barcode scanner, printer, etc.
Emergency opening	electronic via USB key/mechanical with key
Colour	freely selectable



### Extension unit

The LEC extension unit offers the same features and configuration as the basic unit: two widths, free choice of colours, variable height and number of drawers, and LED lighting at the front. Only the attachment has less depth than the basic module and therefore offers additional storage space. Any number of extension units are possible per basic unit.

### Features

Housing (W×D)	36 × 36 E (717 × 725 mm) 54 × 36 E (1023 × 725 mm)
Cabinet height (H)	700 / 850 / 1000 / 1150 / 1450 mm
Drawer front height (H)	75 / 100 / 150 / 200 / 250 / 300 mm
Load capacity	200 kg
Optional	Base Standard partition material
emergency opening	electronic via USB key/mechanical with key
Colour	freely selectable



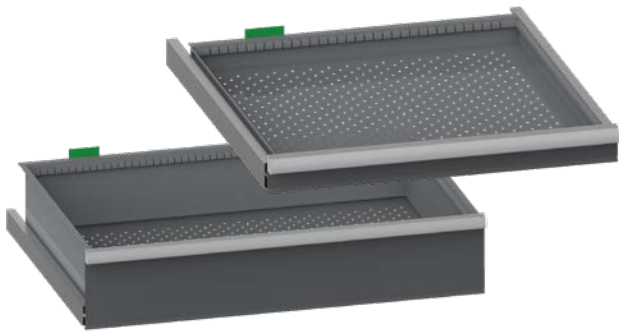


### Drawers with compartments (LISTA Parts Control)

LISTA drawers with compartments have been specially developed for LISTA Parts Control access control at the compartment level. They are available in three heights and have 4 to 54 metal compartments. As a result, the drawers are not only particularly high-quality, they also offer maximum security.

#### Features

Dimensions (W×D)	36×36 E (612×612 mm)
Drawer front height (H)	75/100/150 mm
Number of compartments	4/6/8/12/16/18/24/26/30/36/42/46/48/54
Load capacity	200 kg

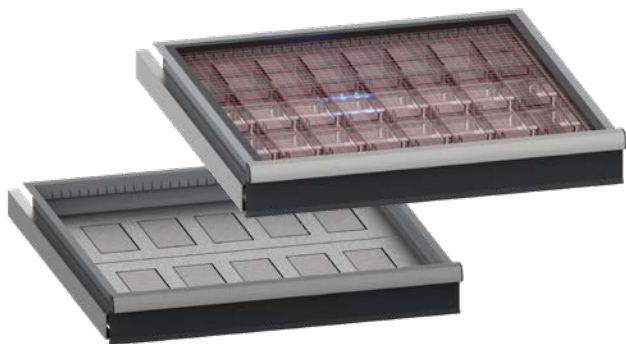


### Drawers without compartments (LISTA Drawer Control)

For LISTA Drawer Control access control at the drawer level, you receive LISTA drawers in six heights and the usual LISTA quality: smooth-running, robust and high-quality workmanship from our in-house production.

#### Features

Dimensions (W×D)	36×36 E (612×612 mm) 54×36 E (918×612 mm)
Drawer front height (H)	75/100/150/200/250/300 mm
Load capacity	200 kg
Optional	Standard partition material



### Optional equipment

Additional equipment is available on request:

- Pick-to-light system with light grid for position indication and automatic access logging
- Scale system for monitoring the weight of stored products, such as for recording quantities

All systems can be controlled via the standard ethernet interface



Configure product

## LISTA E-CABINETS THE RIGHT CHOICE

Are you looking for a quick, simple and decentralised solution for safely stocking your stored goods? Then LISTA E-Cabinets are the right choice for you. The versatile LISTA electric cabinets are available in various designs as drawer, compartment or hinged door cabinets with a standard interface for connecting to LISTA

E-Control or a third-party warehouse management system. As always with LISTA, our E-Cabinets can be flexibly configured and adapted to your individual needs. Just right for optimum access control at cabinet level.



**+ Comprehensive range**  
consisting of drawer cabinet, hinged door cabinet, indoor and outdoor compartment cabinet

**+ Individually configurable**  
in terms of version, equipment and design

**+ Decentralised installation and operation**  
via tablet, laptop or PC

**+ Easy to connect**  
to LISTA E-Control or third-party software

**+ Consistent look and feel**  
thanks to uniform appearance

## Individual options

### Decentralised installation

LISTA E-Cabinets can be operated independently and flexibly anywhere in the company. They are easily accessed via tablet, laptop or PC. A mechanical emergency opening feature is integrated.

### Connection to E-Control

The standard ethernet interface allows you to connect all E-Cabinets to LISTA E-Control and integrate them into your access or warehouse management system.

### Control via third-party software

Alternatively, you can also operate your E-Cabinets with third-party software (SAP, Dynamics, etc.) via the integrated ethernet interface and configure individual settings.

## Control via LISTA E-Control or third-party software



## E-Cabinet components and versions



### Powered drawer cabinet

Powered drawer cabinets from LISTA are available in two common dimensions. They can be flexibly filled with drawers in all available heights and are suitable for a wide range of inventory items, from high-quality tools to medicines. For this purpose, they can be optimally adapted to the stored items with various power modules and LISTA partition material.

#### Features

---

Housing (W×D)	36 × 36 E (717 × 725 mm) 54 × 36 E (1023 × 725 mm)
Cabinet height (H)	700 / 850 / 1000 / 1150 / 1450 mm
Drawer front height (H)	75 / 100 / 125 / 150 / 200 / 250 / 250 / 300 mm
Drawer front height (H) with power modules	200 / 250 / 300 mm
Load capacity	75 / 200 kg
Version:	4 adjustable feet
Optional	LED indication, Base, base cover, Power modules Standard partition material Card reader, barcode scanner, printer, etc.
Emergency opening	mechanical with cylinder lock
Colour	freely selectable



### Powered hinged door cabinet

The LISTA electric hinged door cabinet is suitable for larger items such as devices or canisters. The doors are available either as a solid sheet or with a viewing window to provide an even more convenient overview. The cabinet offers a wide range of equipment options with power modules, fans or LED lighting, allowing it to be used in a wide range of environments.

#### Features

---

Housing (W×D×H)	1000 × 580 × 1970 mm
Door	solid sheet / viewing window
Version	Power modules on rear panel 4 adjustable feet
Optional	Power modules Fan Fault-current circuit breaker LED cabinet lighting Adjustable shelf, drawers, pull-out shelf
Emergency opening	mechanical with cylinder lock
Colour	freely selectable





### Powered compartment cabinet

The powered compartment cabinet from LISTA is a versatile solution for the safe storage and charging of cordless tools, electronic devices and personal items. It is available in various versions and with numerous equipment options and is suitable for indoor use.

#### Features

Housing (W×D×H)	415/810×500×1810 mm
Interior compartment dimensions (W×D×H)	395×475×400 mm
Door	solid sheet/viewing window
Number of compartments	4/8
Version	Power modules on rear panel 4 adjustable feet
Optional	Power modules
Emergency opening	mechanical with cylinder lock
Colour	freely selectable



### E-bike charging station

The e-bike charging station is the LISTA compartment cabinet for outdoor use, equipped with four compartments as standard and available in four colours. Each compartment has a power module for charging e-bike batteries and other electrical devices in storage offering maximum safety and weather protection.

#### Features

Housing (W×D×H)	600×500×2095 mm
Interior compartment dimensions (W×D×H)	500×470×435 mm
Number of compartments	4
Version	Power modules on side panel
Emergency opening	mechanical with cylinder lock
Colour	RAL 5012 RAL 7035 RAL 7035/RAL 5012 RAL 7035/NCS S 6502-B



Configure product

# LISTA E-CONTROL



## Don't search, find

LISTA E-Control provides you with a tailor-made warehouse management system for direct control of your LISTA products. The software which was specially developed for LISTA LEC and E-Cabinets enables the central distribution and organisation of all access rights and maps all handling, storage and retrieval processes seamlessly. E-Control therefore ensures optimum order and full traceability of the removed articles and materials. The system also offers extensive import and export functions for processing and evaluating the collected data – and despite its comprehensive functionality, it is easy and intuitive, just as you have come to expect from LISTA.



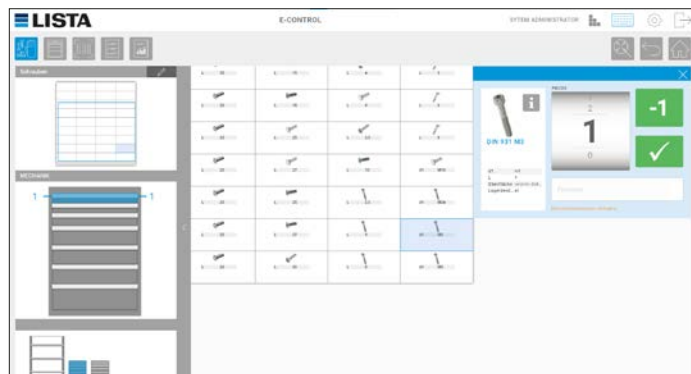
## LED indication

- Alert when stocks run low
- Access areas
- Current position



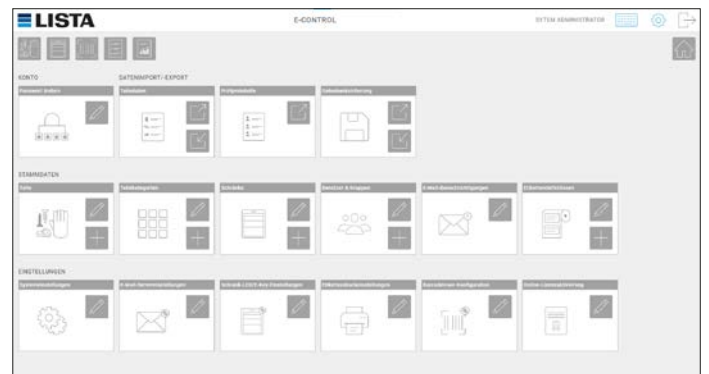
## Quick withdrawal

- Search by barcode, item description and storage location
- Pick list
- Favourites / Most recent withdrawal



## Full functionality

- Visual indication of storage position
- Individual access control down to the compartment level
- Enter and edit product data yourself



## Numerous settings

- Import or export configuration data
- Manage cabinets
- Email notifications
- Design/define labels

## ACCESSORIES

All LISTA access and dispensing systems are optionally available with matching accessories, from card readers to touch monitors. Our accessory products have been carefully selected and guarantee the smooth functioning of your LISTA solution.



Card reader



Bar code scanner



Printers, paper and labels



Monitor and PC

## SERVICE

We support you and your project with our services, from needs analysis to after sales. In the first step, we work together to determine what you need. This is followed by competent advice with the aim of sustainably optimising storage and processes. On this basis, we plan a tailor-made solution and implement it through to installation and training by our team of experts. And after that, LISTA Service is there for you and your LISTA solution for the entire service life.



**advice, planning and visualisation**



**Assembly and installation**



**After sales**



**Training**



**Customer service**



**Repairs**



**Spare parts**



**Yearly maintenance**



